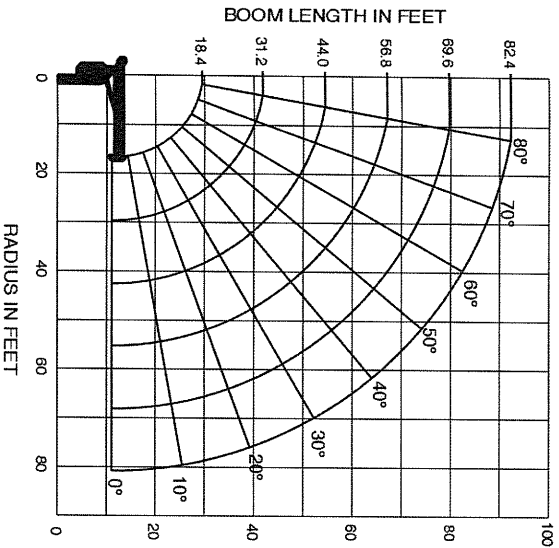
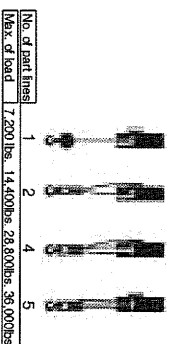


TM-1882 (18 ton) Crane Capacity

WORKING RANGE



- NOTE:
- Rated lifting capacities on this chart show maximum allowable loads with outriggers properly extended on a firm surface and the crane leveled and mounted on a factory recommended truck. The rated lifting capacities in shaded areas are based on crane strength and others, on its stability (not to exceed 85% of tipping). The weight of handling devices such as hook block, slings, etc., must be considered part of the load and must be deducted from the rated lifting capacities.
 - Weights of any accessories attached to the boom or load line must be deducted from the rated lifting capacities. The operator must reduce loads to allow for such factors as wind, ground conditions, operating speed and the effects of freely suspended loads such as boom deflection.
 - For full capacity 360° around the truck, the chassis requires the front stabilizer (ex. rear mounted) and additional counterweight in the underside of the bed.
 - For boom lengths longer than 31.2 ft., extend outriggers to max.
 - For boom lengths longer than 56.8 ft., extend outriggers to max.
 - For boom lengths longer than 69.6 ft., boom means 2nd mark on 4th boom section side plate is half visible.
 - For boom lengths longer than 82.4 ft., boom means 1st mark on 4th boom section side plate is half visible.
 - Which wire rope, diameter x length 9/16" x 279', breaking strength 30,100 lbs.
 - Keep at least 3 wraps of loadline on which drum.
 - Maximum load for number of part lines is as shown below.
 - Part of lines are:



The above lifting heights and boom angles are based on a straight (unladen) boom, and allowances should be made for boom deflection obtained under load condition.

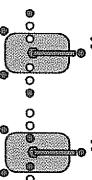
RATED LIFTING CAPACITY (IN POUNDS)

Load radius (ft.)	18.4 ft. Boom				31.2 ft. Boom				44 ft. Boom				56.8 ft. Boom				69.6 ft. Boom				82.4 ft. Boom				
	Loaded Boom		Outriggers Extended		Loaded Boom		Outriggers Extended		Loaded Boom		Outriggers Extended		Loaded Boom		Outriggers Extended		Loaded Boom		Outriggers Extended		Loaded Boom		Outriggers Extended		
	Angle	Max.	Min.	Angle	Max.	Min.	Angle	Max.	Min.	Angle	Max.	Min.	Angle	Max.	Min.	Angle	Max.	Min.	Angle	Max.	Min.	Angle	Max.	Min.	
5	75	36,000	30,000	22,000	76°	17,450	17,450	13,200	79°	17,450	17,450	13,200	80°	9,050	9,050	9,050	9,050	80°	9,050	9,050	600	0°	600	350	
8	64°	23,000	23,000	15,200	73°	17,450	17,450	8,750	76°	14,650	14,650	9,050	78°	9,050	9,050	9,050	9,050	80°	9,050	9,050	600	0°	600	350	
10	57°	19,350	19,350	10,100	69°	15,600	15,600	6,350	76°	12,750	12,750	9,050	78°	9,050	9,050	9,050	9,050	80°	9,050	9,050	600	0°	600	350	
12	48°	16,550	16,550	7,400	64°	13,650	13,650	4,800	73°	12,750	12,750	9,050	78°	9,050	9,050	9,050	9,050	80°	9,050	9,050	600	0°	600	350	
14	38°	14,550	14,550	5,650	60°	12,300	11,600	3,750	70°	11,500	11,000	9,050	76°	9,050	9,050	9,050	9,050	80°	9,050	9,050	600	0°	600	350	
16	24°	13,000	12,700	4,500	51°	10,000	7,700	2,350	65°	9,400	7,700	9,050	72°	8,450	7,700	9,050	9,050	80°	9,050	9,050	600	0°	600	350	
20					36°	8,100	4,950	1,300	57°	7,600	4,950	9,050	66°	6,900	4,950	9,050	9,050	80°	9,050	9,050	600	0°	600	350	
25									48°	6,250	3,350	9,050	61°	5,650	3,350	9,050	9,050	80°	9,050	9,050	600	0°	600	350	
30									38°	5,050	2,400	9,050	54°	4,800	2,400	9,050	9,050	80°	9,050	9,050	600	0°	600	350	
35									38°	5,050	2,400	9,050	54°	4,800	2,400	9,050	9,050	80°	9,050	9,050	600	0°	600	350	
40									23°	3,800	1,650	9,050	47°	3,800	1,650	9,050	9,050	80°	9,050	9,050	600	0°	600	350	
45													29°	3,400	1,150	9,050	9,050	80°	9,050	9,050	600	0°	600	350	
45														39°	3,400	1,150	9,050	9,050	80°	9,050	9,050	600	0°	600	350
50														29°	2,700	900	9,050	9,050	80°	9,050	9,050	600	0°	600	350
55																		22°	1,600	1,600	600	0°	600	350	
60																					42°	1,600	600	350	
65																					35°	1,350	70	75	
70																					28°	1,200	75	80	
75																					14°	850	80	80	
80																									
	0°	8,400	8,400	4,050	0°	3,950	3,400	600	0°	1,850	1,300	700	0°	1,100	700	600	0°	600	0°	600	350	0°	350	80	

Notice: The chart is only for reference and should not be used for operation. Maintain a clearances at least 10 feet between any part of the crane, load line or load and any electrical line carrying up to 50,000 volts. One-foot additional clearance is required for every additional 30,000 volts or less.

<TRACTOR MOUNTED>

Outriggers Max. Outriggers Min.



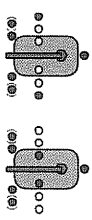
Extension Mark

Yellow Extended Mid. White Extended Max. Extended Mid. Extended Max.



<CAB BACK MOUNTED>

Outriggers Max. Outriggers Min.



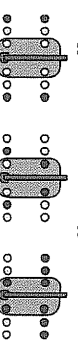
Extension Mark

Yellow Extended Mid. White Extended Max. Extended Mid. Extended Max.



<REAR MOUNTED>

Outriggers Max.



Extension Mark for Rear Mount

Yellow Extended Mid. White Extended Max. Front Outriggers Rear Outriggers



Outriggers Min.



Yellow Extended Mid. White Extended Max. Extended Mid. Extended Max.

